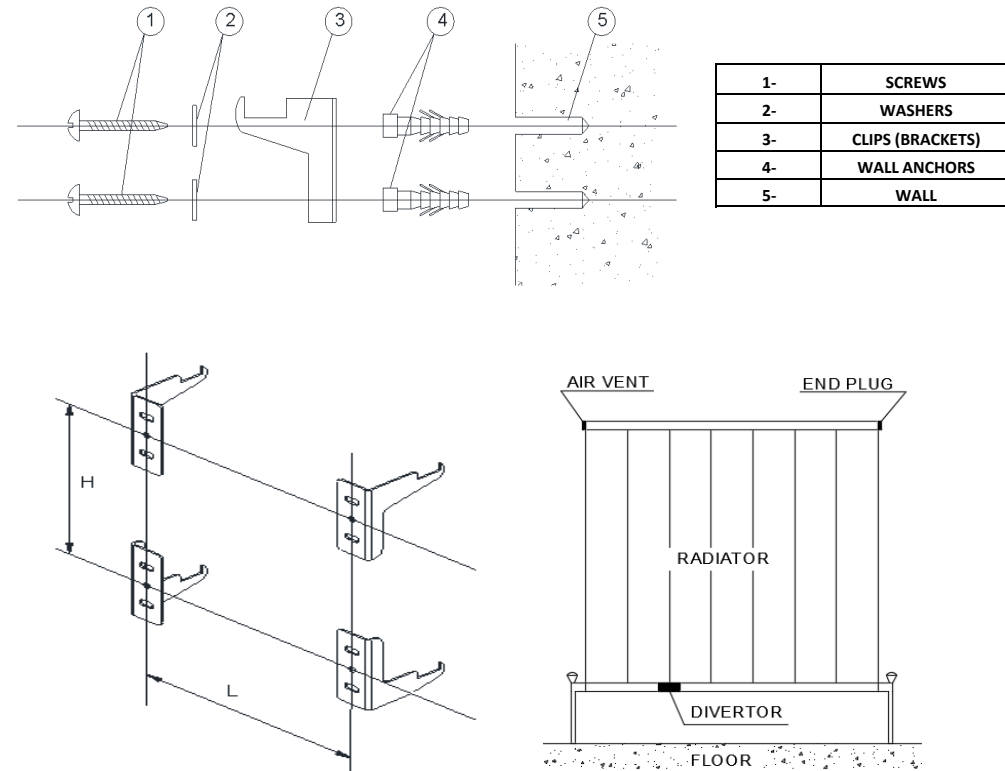


BELVA (SINGLE/DOUBLE) INSTALLATION GUIDE

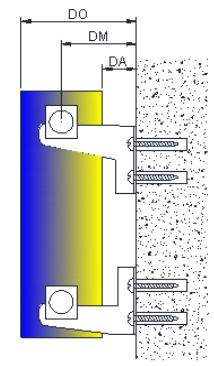
This product must be fitted only by a fully qualified installer.

DESCRIPTION	DESCRIPTION	ILLUSTRATION
 RADIATOR x 1	Fixing choose the appropriate fixing for the wall material if required PTFE tape Electric drill Masonry drill bit appropriate to the fixings Adjustable spanner Radiator valve hex key	
 TOP - RIGHT CLIPS x 1	Flat head and philips head screw drivers 1 lock shield valve and 1 gate or thermostatic valve Spirit level Measuring tape	
 TOP - LEFT CLIPS x 1		
 BOTTOM - RIGHT CLIPS x 1	END PLUG x 1	
 BOTTOM - LEFT CLIPS x 1	FIXING SCREWS x 4	
 WASHERS x 4	WALL ANCHORS x 4	
 AIR VENT x 1	GASKETS x 4	



1-	SCREWS
2-	WASHERS
3-	CLIPS (BRACKETS)
4-	WALL ANCHORS
5-	WALL

NAMES	A	B	C	TUBE QTY	DA	DM	DO	H	L
BELVA (SINGLE)	600	412	545	4	25	34	68	480	170
BELVA (SINGLE)	600	620	545	6	25	34	68	480	378
BELVA (SINGLE)	600	828	545	8	25	34	68	480	378
BELVA (SINGLE)	600	1036	545	10	25	34	68	480	586
BELVA (SINGLE)	600	1244	545	12	25	34	68	480	794
BELVA (SINGLE)	600	1452	545	14	25	34	68	480	1002
BELVA (SINGLE)	1800	308	1745	3	25	34	68	1680	66
BELVA (SINGLE)	1800	412	1745	4	25	34	68	1680	170
BELVA (SINGLE)	1800	516	1745	5	25	34	68	1680	274
BELVA (DOUBLE)	600	412	545	4	21	55	89	480	170
BELVA (DOUBLE)	600	620	545	6	21	55	89	480	378
BELVA (DOUBLE)	600	828	545	8	21	55	89	480	378
BELVA (DOUBLE)	600	1036	545	10	21	55	89	480	586
BELVA (DOUBLE)	600	1244	545	12	21	55	89	480	794
BELVA (DOUBLE)	600	1452	545	14	21	55	89	480	1002
BELVA (DOUBLE)	1800	308	1745	3	21	55	89	1680	66
BELVA (DOUBLE)	1800	412	1745	4	21	55	89	1680	170
BELVA (DOUBLE)	1800	516	1745	5	21	55	89	1680	274



GENERAL RECOMMENDATION

- Before fitting the radiator it is necessary to wash out the heating system to remove any existing mud, scale, work residues, traces of flux, oil, etc.
- When the system water pH is outside the 5,5-8,5 range and/or when the dissolved is above 0,1mg/liter, it is always needed to protect the heating system components (the radiator is one of these) with a proper chemical treatment compatible with all parts in contact with water (silicon rubber too).
- In order to fit the radiator to the wall, it is necessary to choose the proper fixings for the wall material.
- If the system water exceeds 50°C, please install a warning mark near the radiator to avoid any accidental scalding.
- Clean the radiator surface only with a soft cloth to avoid scratching the finish and do not use chemical agents during cleaning operations. It is prohibited to climb on the radiator.
- Maximum working temperature 95°C, maximum working pressure 4 bar.